

A New *Synuchus* (Coleoptera, Carabidae) from Taiwan

Seiji MORITA

Higashi-gotanda 5–19–7, Shinagawa-ku, Tokyo, 141–0022 Japan

Abstract A new species of the genus *Synuchus* is described from Taiwan under the name of *S. masumotoi* sp. nov.

The purpose of this paper is to describe a new platynine species from Taiwan under the name of *Synuchus* (*Synuchus*) *masumotoi* sp. nov.

The abbreviations used herein are the same as those explained in my previous papers.

Before going further, I wish to express my deep gratitude to Dr. Shun-Ichi UÉNO of the National Museum of Nature and Science, Tokyo, for critically reading the original manuscript of this paper. Hearty thanks are also due to Dr. Kimio MASUMOTO for supplying me with important material.

I am deeply indebted to Dr. Jiří HÁJEK of the National Museum, Prague for his giving me the information of the type specimen of *Synuchus testaceus* (JEDLIČKA). Similar prompt aid was given by Dr. Svatopluk BILÝ.

Deep gratitude is also due to Mr. Ichiro OSHIO for his assistance in taking the photograph inserted in this paper.

Synuchus (*Synuchus*) *masumotoi* MORITA, sp. nov.

(Figs. 1–11)

Diagnosis. Body rather large, with wide pronotum; body black with weak iridescent lustre on elytra; terminal segments of palpi not dilated; hind angles of pronotum rounded, without postangular setae; elytral stria 7 approaching to the apex of stria 1; elytral apices not obliquely truncate; anal sternite (VI) deeply emarginate at apex in ♂; segments 1–3 of meso- and metatarsi bisulcate; claw serrate; aedeagus elongate and almost straight from basal 1/3 to apex in lateral view; right paramere weakly bent at basal 3/5; apical styli in ♀ elongate.

Description. L: 13.57–14.86 mm. Body rather large with wide pronotum. Body black; appendages dark brown; elytra with weak iridescent lustre.

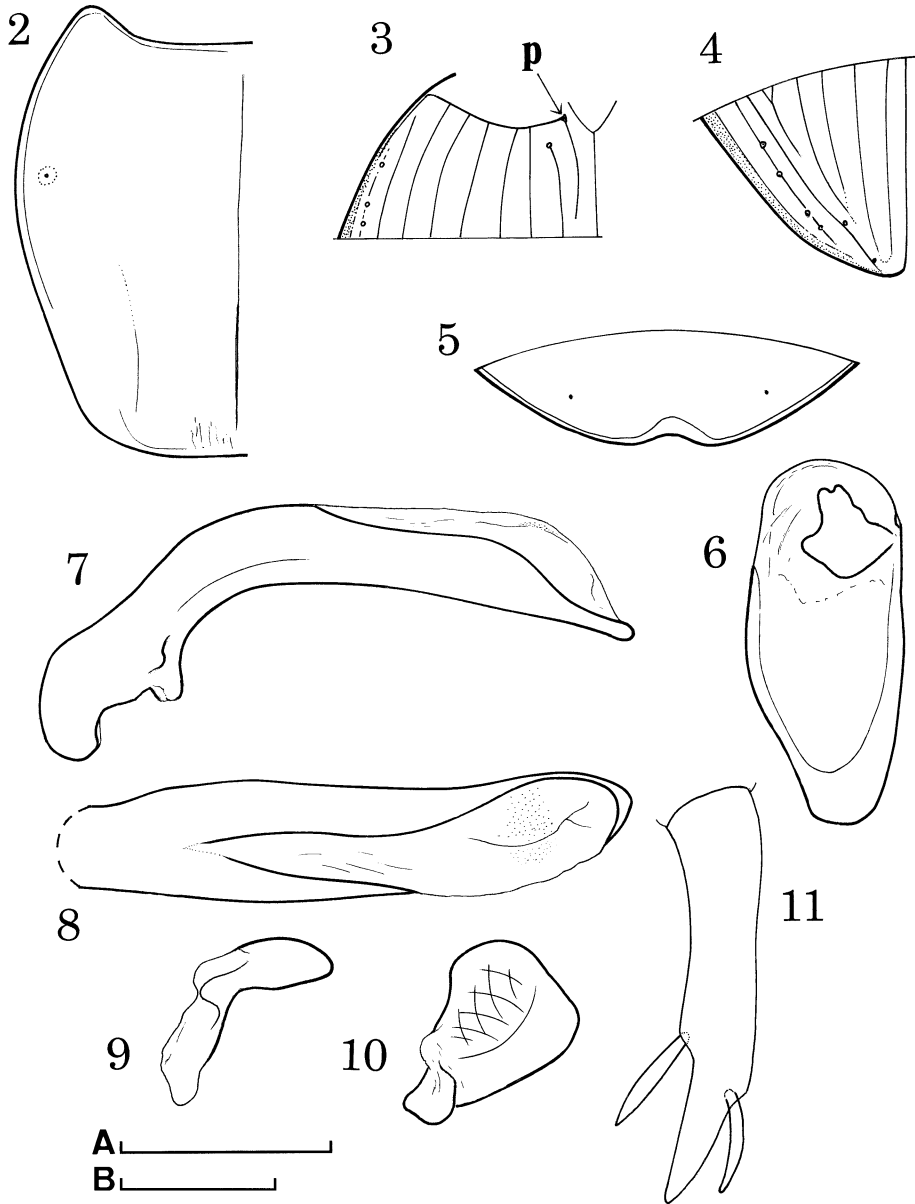
Head moderately convex, with weakly convex eyes; frontal furrows linear, very shallow and slightly divergent posteriad, or almost vestigial; anterior supraorbital pore foveolate and situated at a level of basal 2/3 of eyes; lateral grooves almost straight or



Fig. 1. *Synuchus (Synuchus) masumotoi* MORITA, sp. nov.

weakly curved along the eyes, and becoming shallower posteriad; posterior supraorbital pore situated a little behind the post eye level; microsculpture consisting of isodiametric meshes on frons, and of wide to transverse meshes on neck; genae variable in size, but always well convex; GL/eL 0.45, 0.65 in 2 ♀♀; mentum tooth rather wide and weakly bifid at the tip; apex of labrum weakly emarginate; terminal segment of labial palpus cylindrical and widest at about middle (not dilated); terminal segment of maxillary palpus widest at about middle; antennal segment 2 with a long seta; relative lengths of antennal segments as follows:— I : II : III : IV : V : VI : XI \approx 1 : 0.59 : 1.25 : 1.33 : 1.39 : 1.37 : 1.23 in ♂, \approx 1 : 0.55 : 1.20 : 1.25 : 1.26 : 1.22 : 1.14 in ♀.

Pronotum large, weakly convex and widest at about apical 3/8–2/5; PW/HW 1.62 in ♂, 1.56–1.62 (M 1.59) in 3 ♀♀; PW/PL 1.15 in ♂, 1.04–1.09 (M 1.07) in 3 ♀♀; PW/PA 1.43 in ♂, 1.42–1.48 (M 1.44) in 3 ♀♀; sides widely arcuate in front and very weakly so from basal third to hind angles; apical angles strongly produced and simply rounded at the tips; apex almost straight at middle and very weakly emarginate or almost oblique at the sides; median line finely impressed, not reaching apex nor base, and



Figs. 2-11. *Synuchus (Synuchus) masumotoi* MORITA, sp. nov. — 2, Left side of pronotum; 3, basal part of left elytron; 4, apical part of left elytron; 5, apical part of anal sternite in ♂; 6, genital segment, ventral view; 7, aedeagus, left lateral view; 8, aedeagus, dorsal view; 9, right paramere, left lateral view; 10, left paramere, left lateral view; 11, apical styli in female. — P: meeting point between basal border and scutellar striae. Scale: A, 1 mm for 5, 7-10; 2 mm for 2-4, 6; B, 0.2 mm for 11.

slightly widening and deepening near base; anterior marginal setae situated at the widest part or a little before that level, a little distant from the margin, and with foveolate roots; anterior transverse impression vestigial; basal foveae rather deep, narrow and smooth; hind angles rounded, without postangular setae; basal part with very shallow longitudinal wrinkles at the median part; base briefly bordered on each side; microsculpture consisting of fine transverse meshes.

Elytra elongate and moderately convex; EW/PW 1.29 in ♂, 1.26–1.33 (M 1.29) in 3 ♀♀; EL/EW 1.72 in ♂, 1.62–1.72 (M 1.66) in 3 ♀♀; shoulders completely effaced; sides weakly arcuate throughout, with no preapical emargination; apices rather rounded (not obliquely truncate); striae deep and weakly crenulate; scutellar striole rather long and situated on interval I; basal pore usually situated at the base of striae 1, rarely on interval I and close to base of stria 1; meeting point between basal border and scutellar striole deeply concave on each side; microsculpture very weakly impressed and composed of fine transverse lines; intervals moderately convex and impunctate; marginal series of umbilicate pores 19–21 in number; two dorsal pores situated on interval III and adjoining stria 2 or on the interval; the first pore situated at about basal 1/3–3/7 of elytra, the second one at a little behind the middle to basal 3/4; striae 1 and 2 clearly impressed throughout; stria 7 approaching to the apex of stria 1; apices of striae 3 and 4 anastomosed at a little before the elytral apices; elytral epipleuron gradually narrowed apicad; inner plica indistinct.

Ventral surface almost smooth; anal sternite (VI) deeply emarginate at apex in ♂, narrowly arcuate in ♀.

Legs long and slender; metatrochanter very short, with rounded apex; segments 1–3 of meso- and metatarsi bisulcate; segment 4 of metatarsi with two minute setae on dorso-apical part; claw segments of meso- and metatarsi with several setae on ventral side; claw serrate.

Genital segment elongated ovate, with short and wide handle.

Aedeagus elongate, moderately arcuate at basal third and almost straight from basal 1/3 to apex in lateral view; viewed dorsally, apical part very weakly curved towards the right, and with simply rounded apex. Right paramere weakly bent at basal 3/5, with simply rounded apex; left paramere triangular. Apical styli in ♀ elongate, with two robust spines.

Type series. Holotype: ♂, Mt. Tahanshanm, Pingtung Hsien, 13–III–2003, K. Masumoto leg. Paratypes: 1 ♀, Liukei, Kaohsiung Hsien, 18–XI–1984, native collector; 3 ♀♀, Mt. Tahanshanm, Pingtung Hsien, 13–III–2003, K. Masumoto leg.

Range. Taiwan.

Notes. According to the key given by LINDROTH (1956, p. 494), this species is similar in structure of hind angle of pronotum and meso- and metatarsi to *Synuchus testaceus* JEDLIČKA (1940, p. 4), but mainly differs from the latter in the larger body, wider pronotum and almost straight aedeagus.

要 約

森田誠司：台湾産ツヤヒラタゴミムシ属 *Synuchus* (コウチュウ目オサムシ科) の 1 新種。——益本仁雄博士によって台湾で採集されたツヤヒラタゴミムシ *Synuchus* を、新種とみなして記載し *S. masumotoi* と命名した。この種は、大型で、幅広い前胸背板と後角毛を欠くこと、雄の腹端節先端部が彎入し、基部 1/3 から先端までまっすぐな陰茎などの特徴をもつ。

References

- JEDLIČKA, A., 1940. Neue Carabiden aus Ostasien. (hauptsächlich von der Insel Formosa.) (XIII. Teil.). Praha: A. JEDLIČKA, 18 pp.
- HABU, A., 1978 a. Carabidae: Platynini (Insecta: Coleoptera). *Fauna Japonica*. viii + 447 pp., 36 pls. Keigaku Publ., Tokyo.
- 1978 b. Notes and description of Formosan Carabidae taken by Dr. S.-I. UÉNO in 1961 (Coleoptera, Carabidae) VIII. *Synuchus* spp. *Ent. Rev. Japan, Osaka*, **31**: 33–67.
- LINDROTH, C. H., 1956. A revision of the genus *Synuchus* GYLLENHAL (Coleoptera: Carabidae) in the widest sense, with notes of *Pristosia* MOTSCHULSKY (*Eucalathus* BATES) and *Calathus* BONELLI. *Trans. r. ent. Soc. London*, **108**: 485–585.